



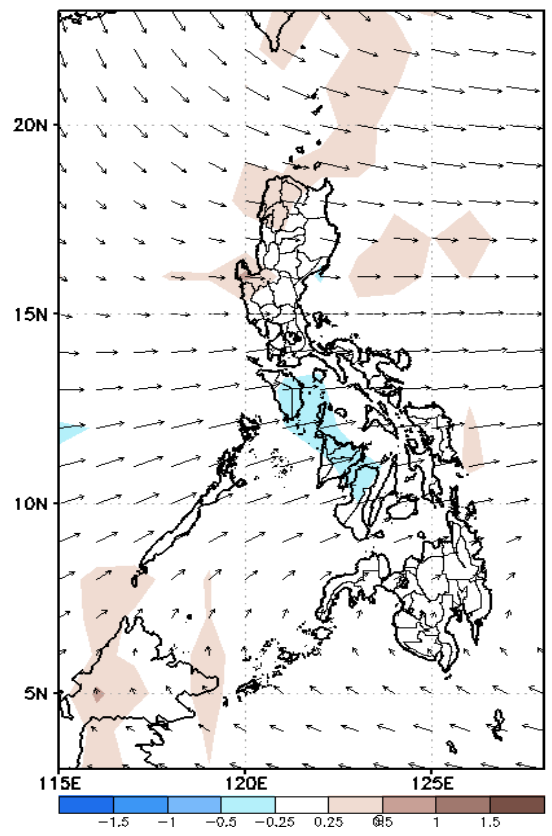
# Week 1 & Week 2 Forecast for the Philippines using GEFS Model



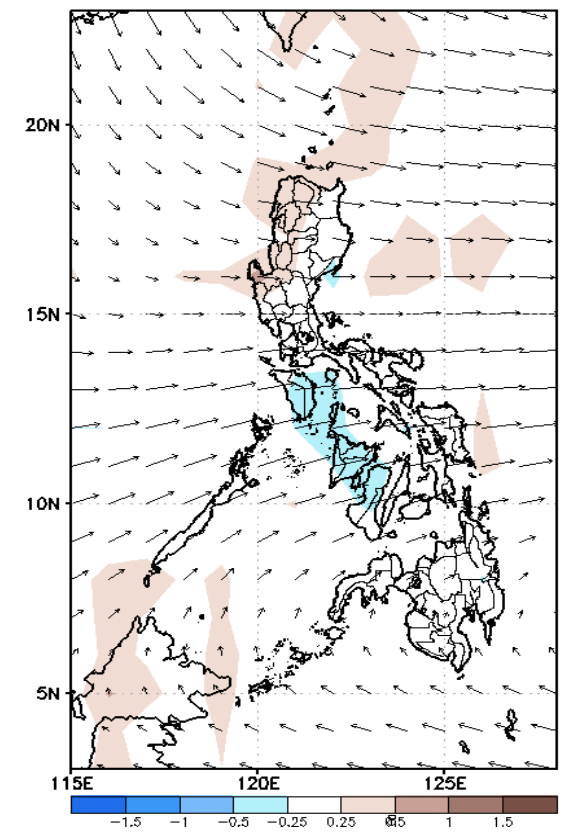
# GEFS Week-1 Forecasts: Wind Anomaly Forecast

Week 1: Sep 14-20, 2022

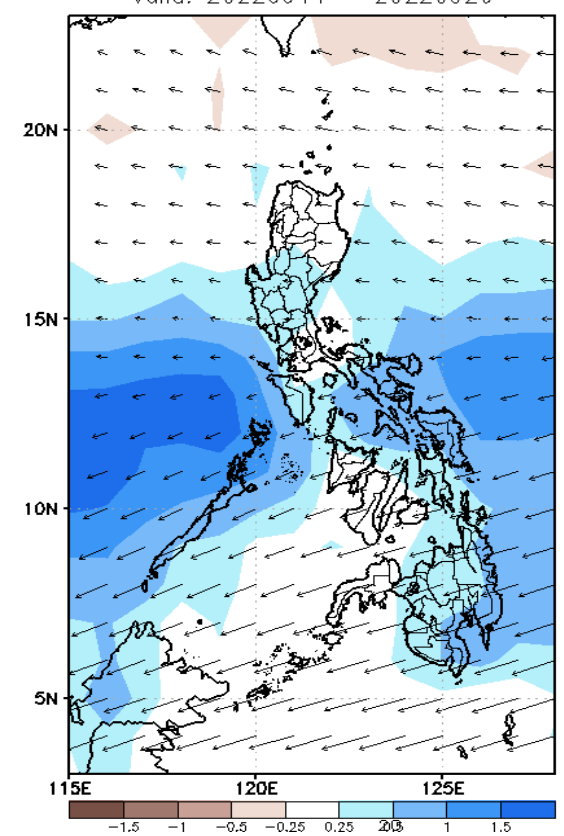
GEFS Week-1 850-hPa Divergence and Wind Anomaly  
Valid: 20220914 - 20220920



GEFS Week-1 700-hPa Divergence and Wind Anomaly  
Valid: 20220914 - 20220920



GEFS Week-1 200-hPa Divergence and Wind Anomaly  
Valid: 20220914 - 20220920

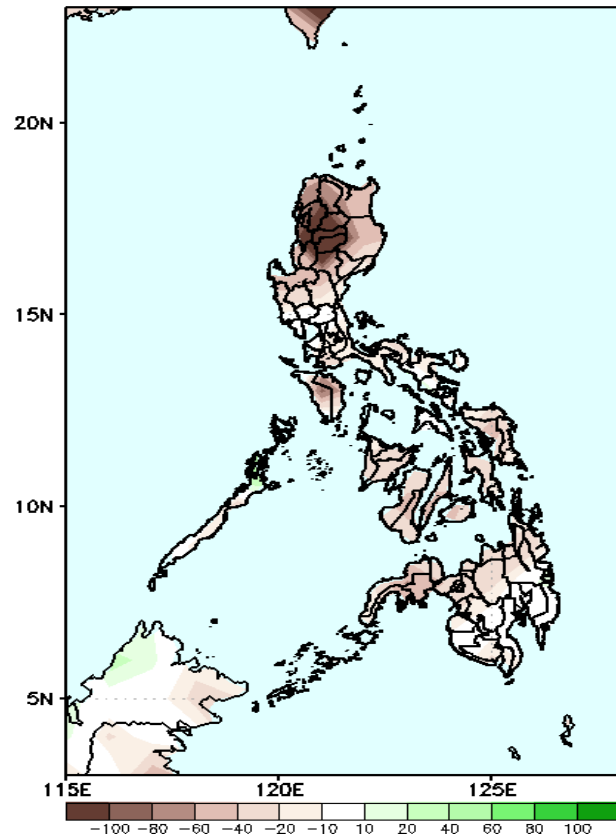


Southwest Monsoon affecting most parts of Luzon and Visayas while Easterlies affecting Mindanao during the forecast period.

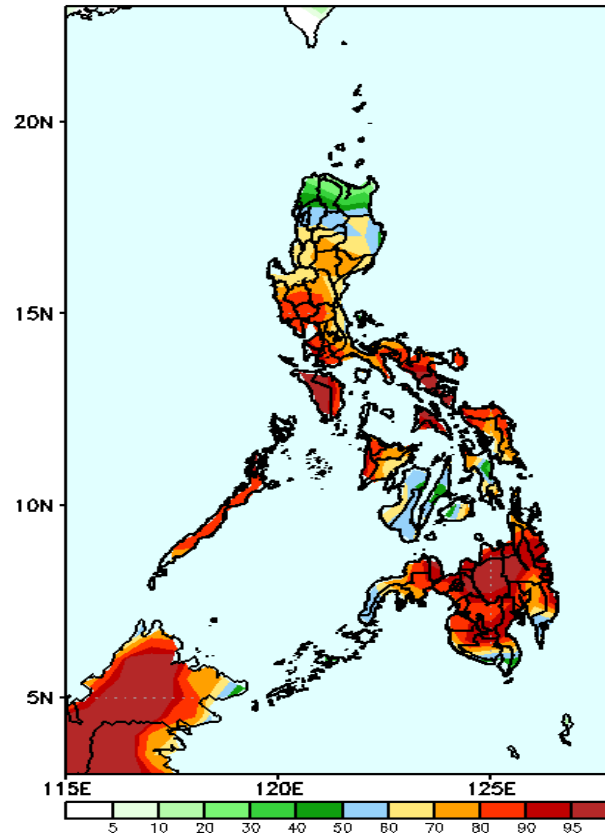
# Precipitation Anomaly and Exceedance Probability > 25/50 mm

Week 1: Sep 14-20, 2022

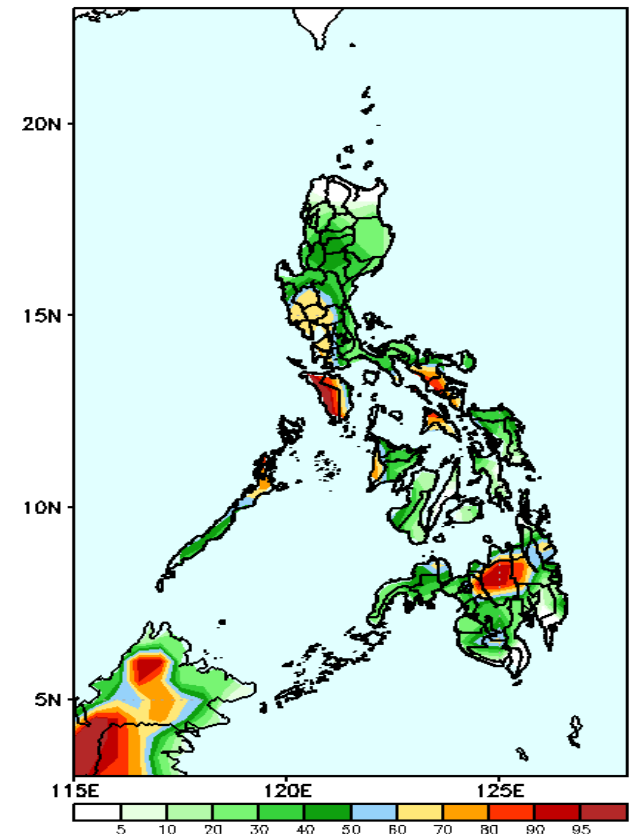
GEFS Week-1 Precip. Anomaly  
Valid: 20220914 - 20220920



GEFS Week-1 Exceedance Prob. > 25mm  
Valid: 20220914 - 20220920



GEFS Week-1 Exceedance Prob. > 50mm  
Valid: 20220914 - 20220920



Rainfall deficit of 20 - 100mm is expected in most parts of the country during the forecast period.

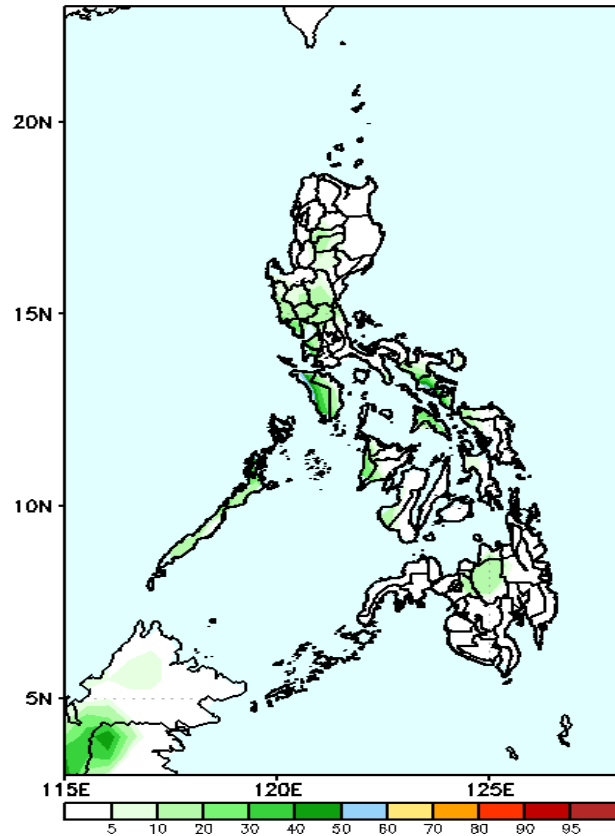
High probability of rainfall to exceed 25mm in most parts of the country except in Ilocos Norte, Apayao and Cagayan during the forecast period.

High probability of rainfall to exceed 50mm in Mindoro, some parts of Bicol region, Panay Island, Zamboanga Peninsula and northern and central Mindanao while less likely for the rest of the country during the forecast period.

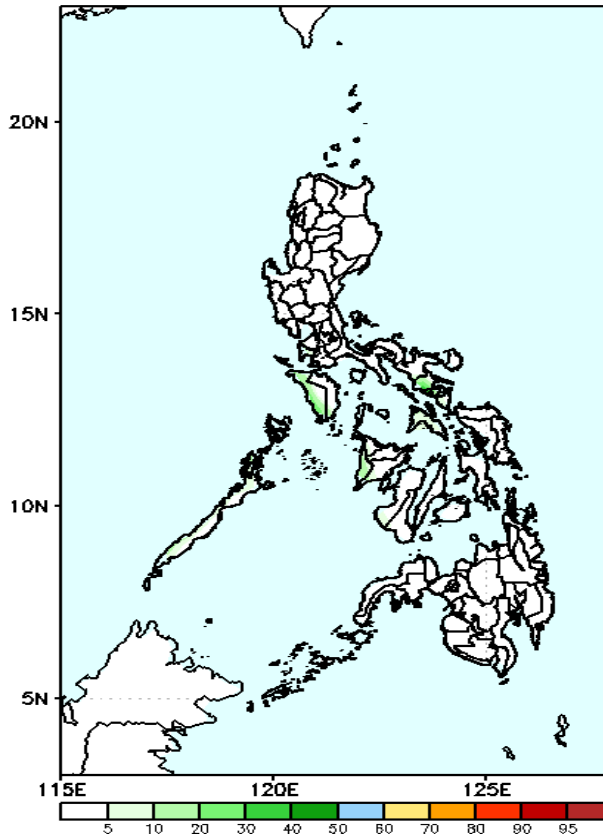
# Exceedance Probability > 100/150/200 mm

Week 1: Sep 14-20, 2022

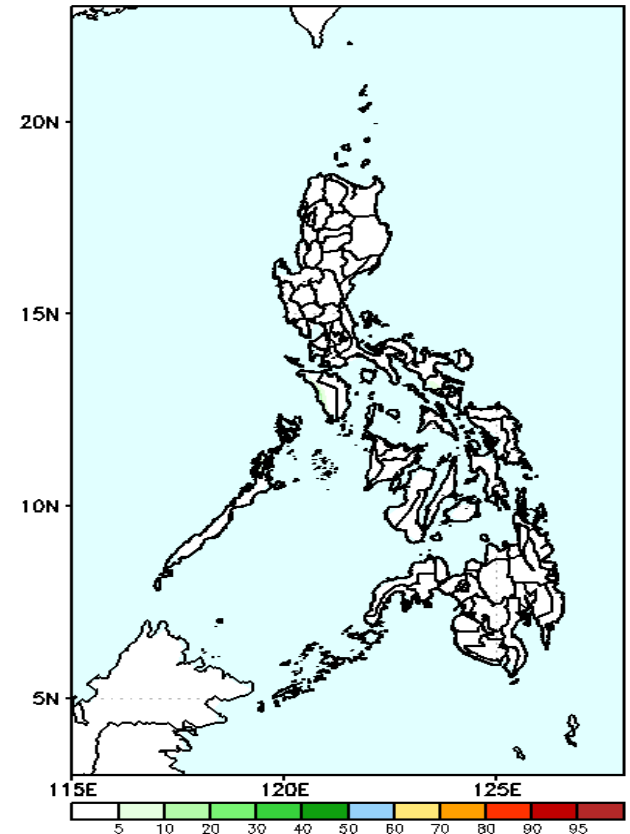
GEFS Week-1 Exceedance Prob. > 100mm  
Valid: 20220914 - 20220920



GEFS Week-1 Exceedance Prob. > 150mm  
Valid: 20220914 - 20220920



GEFS Week-1 Exceedance Prob. > 200mm  
Valid: 20220914 - 20220920



Low probability of rainfall to exceed 100mm in most parts of the country during the forecast period.

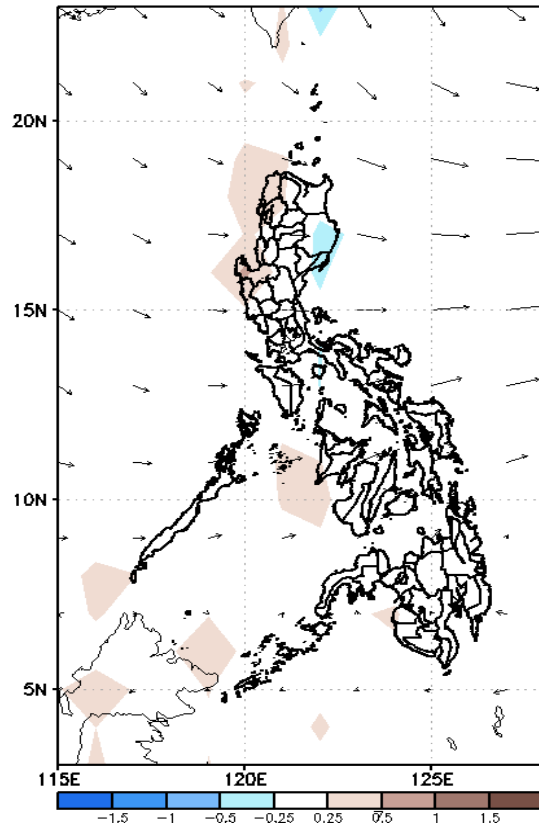
Low probability of rainfall to exceed 150mm in most parts of the country during the forecast period.

Low probability of rainfall to exceed 200mm in most parts of the country during the forecast period.

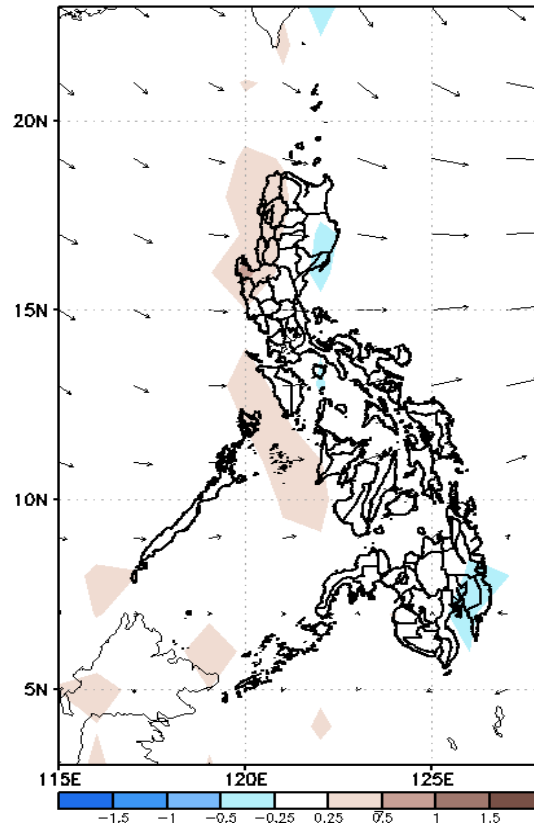
# GEFS Week-2 Forecasts: Wind Anomaly Forecast

Week 2: Sep 21-27, 2022

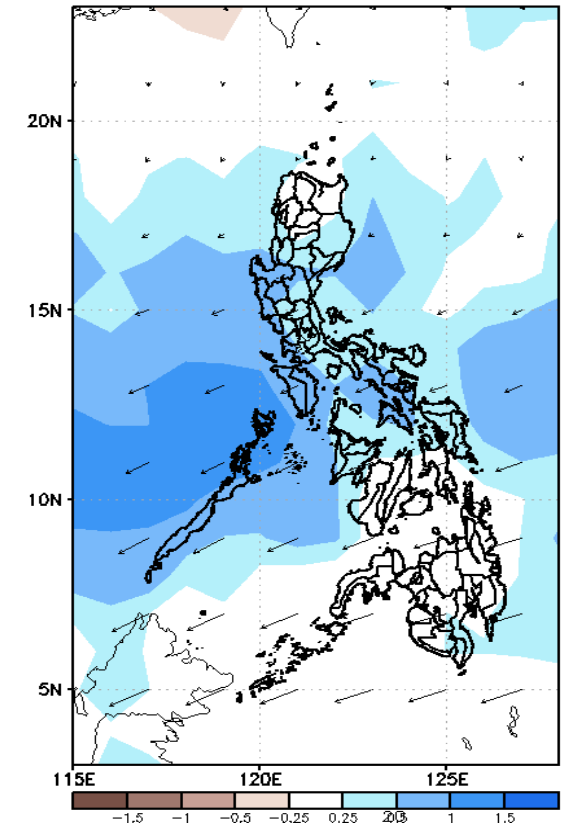
GEFS Week-2 850-hPa Divergence and Wind Anomaly  
Valid: 20220921 - 20220927



GEFS Week-2 700-hPa Divergence and Wind Anomaly  
Valid: 20220921 - 20220927



GEFS week-2 200-hPa Divergence and Wind Anomaly  
Valid: 20220921 - 20220927

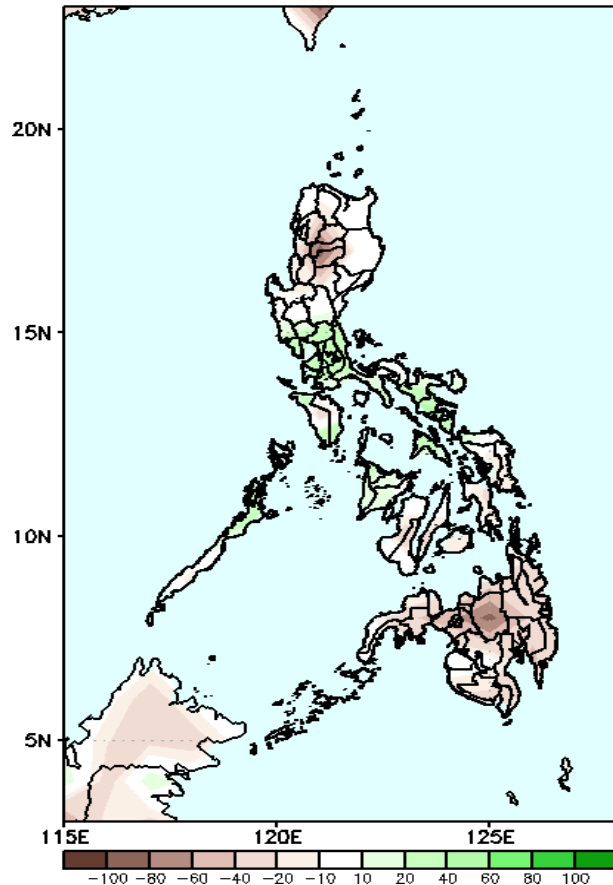


Southwest Monsoon affecting most parts of Luzon and Visayas while Easterlies affecting Mindanao during the forecast period.

# Precipitation Anomaly and Exceedance Probability > 25/50 mm

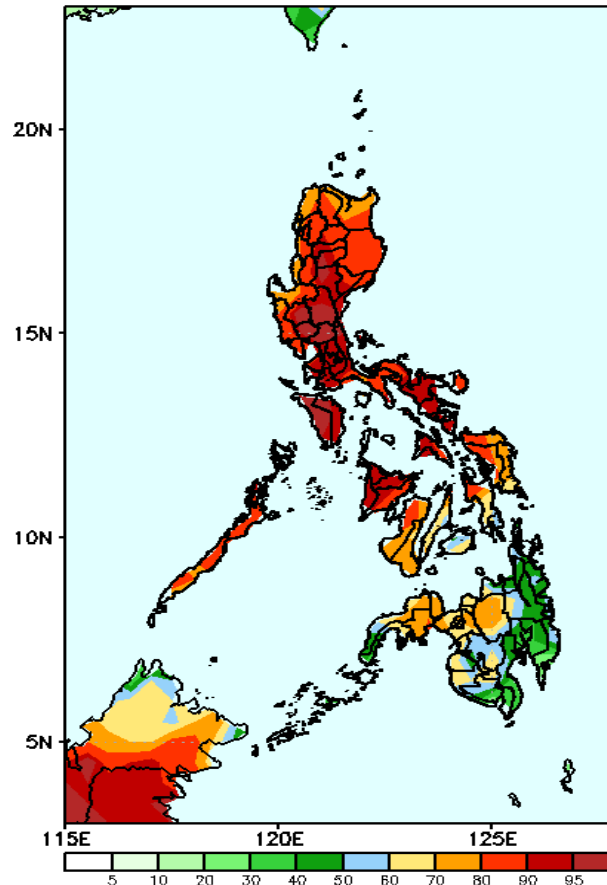
Week 2: Sep 21-27, 2022

GEFS Week-2 Precip Anomaly  
Valid: 20220921 - 20220927



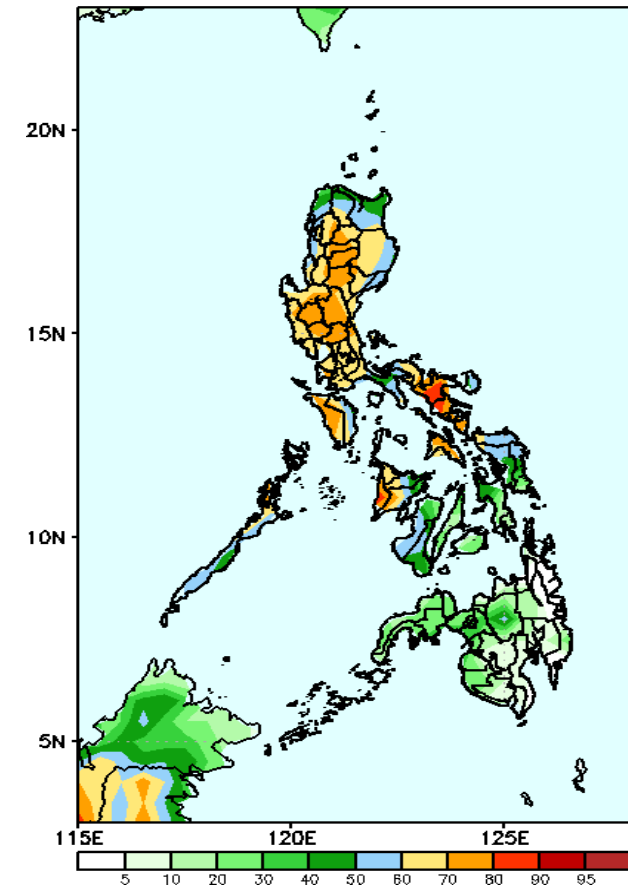
Rainfall deficit of 40-80mm is expected in most parts of the country except in some areas of Central Luzon, most parts of Southern Luzon and Panay Island where increase of rainfall of 20-40mm is more likely during the forecast period.

GEFS Week-2 Exceedance Prob. > 25mm  
Valid: 20220921 - 20220927



High probability of rainfall to exceed 25mm in most parts of the country except CARAGA and Davao region during the forecast period.

GEFS Week-2 Exceedance Prob. > 50mm  
Valid: 20220921 - 20220927



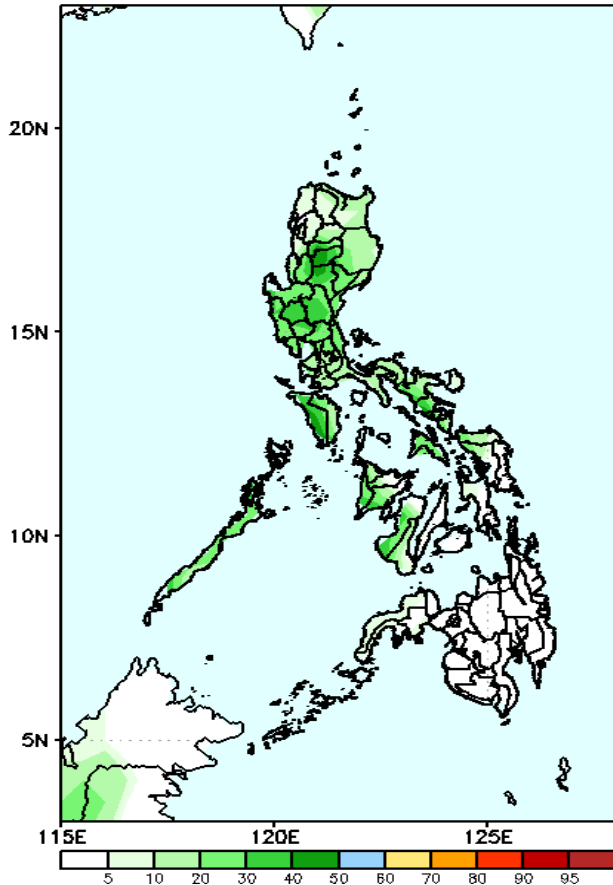
High probability of rainfall to exceed 50mm in most parts of Luzon and Panay Island while less likely for the rest of the country during the forecast period.



# Exceedance Probability > 100/150/200 mm

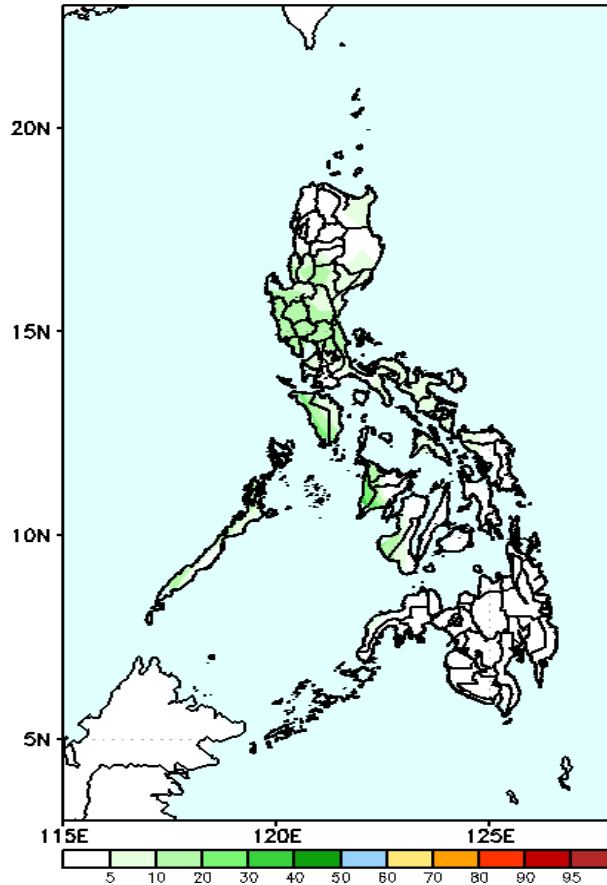
Week 2: Sep 21-27, 2022

GEFS Week-2 Exceedance Prob. > 100mm  
Valid: 20220921 - 20220927



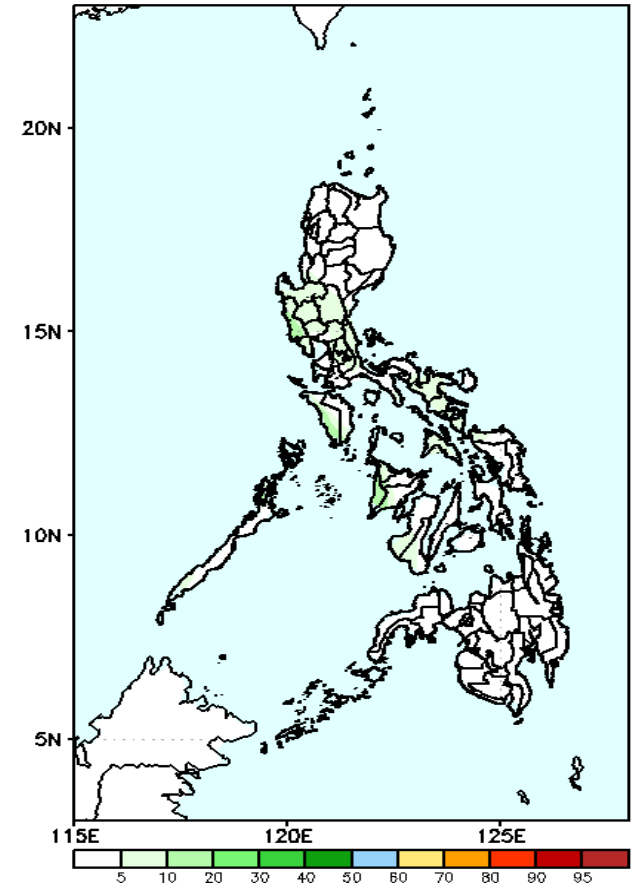
Low probability of rainfall to exceed 100mm in most parts of the country during the forecast period.

GEFS Week-2 Exceedance Prob. > 150mm  
Valid: 20220921 - 20220927



Low probability of rainfall to exceed 150mm in most parts of the country during the forecast period.

GEFS Week-2 Exceedance Prob. > 200mm  
Valid: 20220921 - 20220927

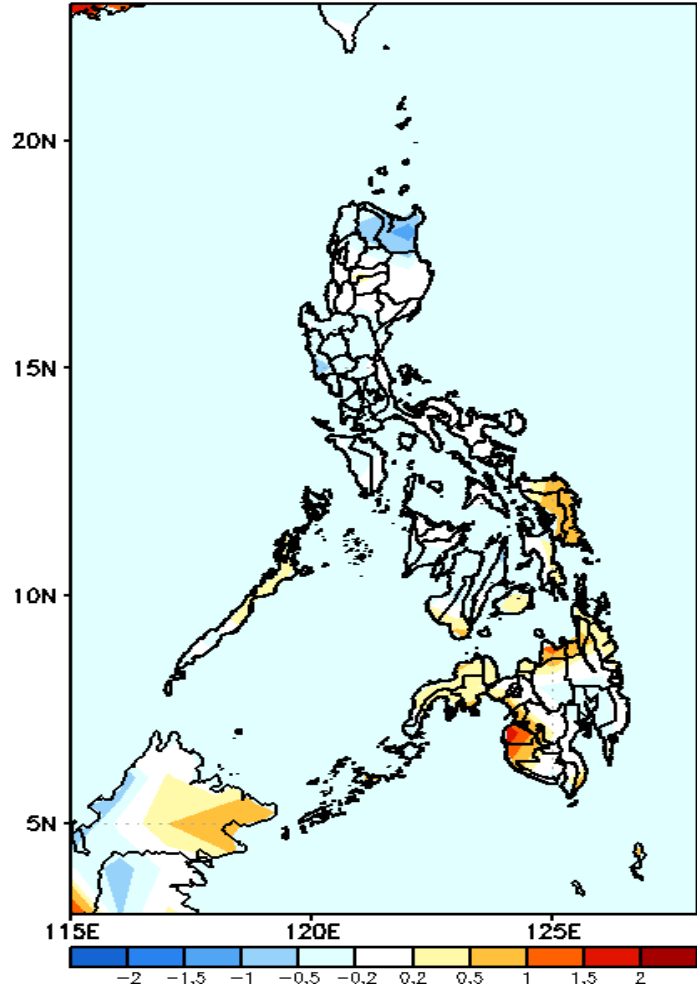


Low probability of rainfall to exceed 200mm in most parts of the country during the forecast period.



# GEFS Week-1 & 2 Forecasts: T2m Anomaly

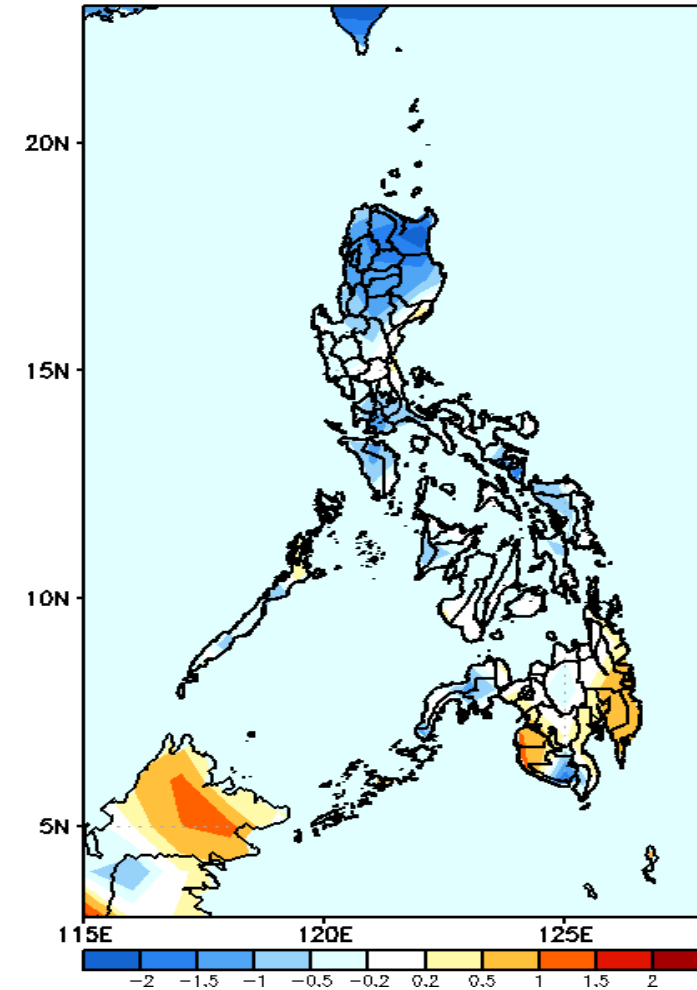
GEFS Week-1 T2m Anomaly  
Valid: 20220914 - 20220920



## 2m Temperature Week 1: Sep 14-20, 2022

Slightly cooler than average surface air temperature will likely experience in most parts of Luzon, Western Visayas, and some parts of Davao region while slightly warmer to warmer than average temperature is expected in Palawan and remaining parts of Visayas and Mindanao during the forecast period.

GEFS Week-2 T2m Anomaly  
Valid: 20220921 - 20220927



## 2m Temperature Week 2: Sep 21-27, 2022

Slightly cooler to cooler than average surface air temperature will likely experience in most parts of the country except in Davao Region, Maguindanao and Sultan Kudarat where slightly warmer to warmer than average temperature is expected during the forecast period.